

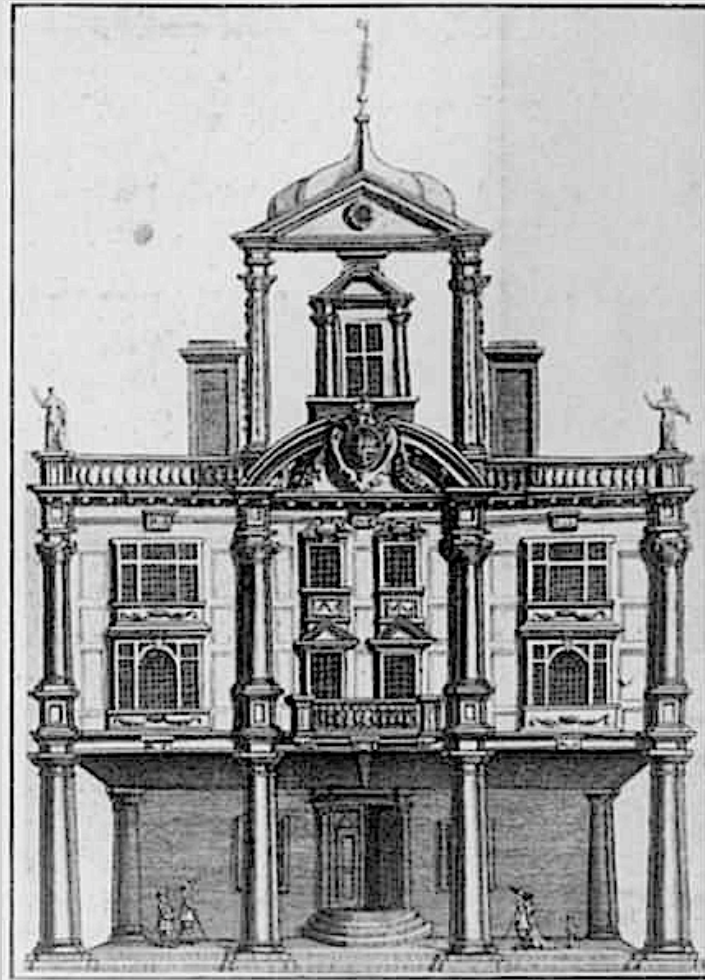
'THE PLAYHOUSE IS AN
ENCHANTED ISLAND, WHERE
NOTHING APPEARS IN REALITY
WHAT IT IS NOR WHAT IT
SHOULD BE'.

Tom Brown, *Amusements Serious
and Comical calculated for the
Meridian of London* (1700)

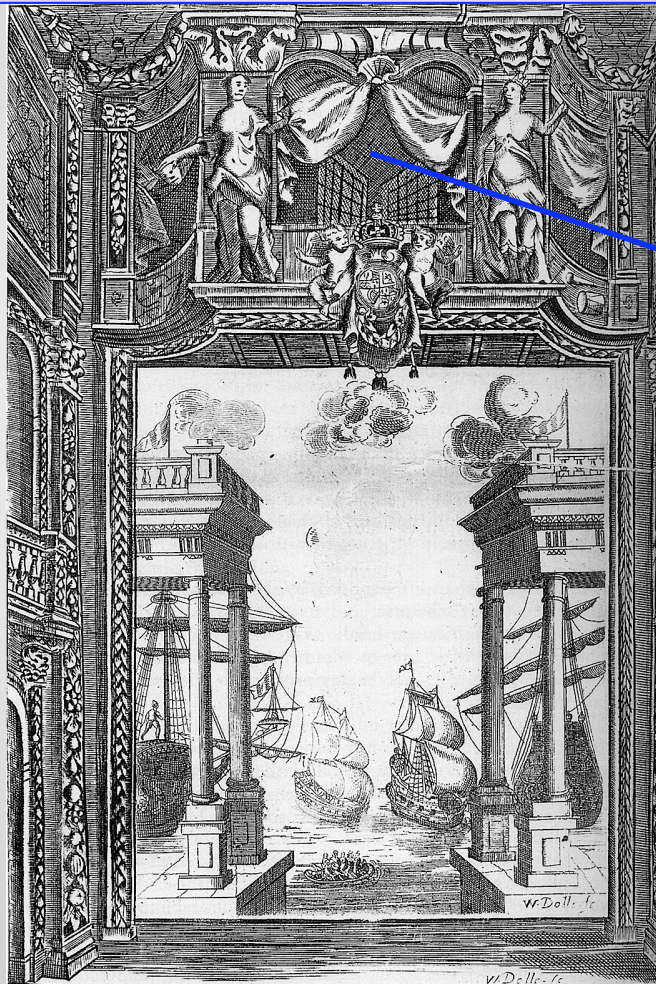
SIR WILLIAM DAVENANT (1606 – 1668)



Dorset Garden, the Duke's Company playhouse, built in 1671 by the troupe created by sir William Davenant

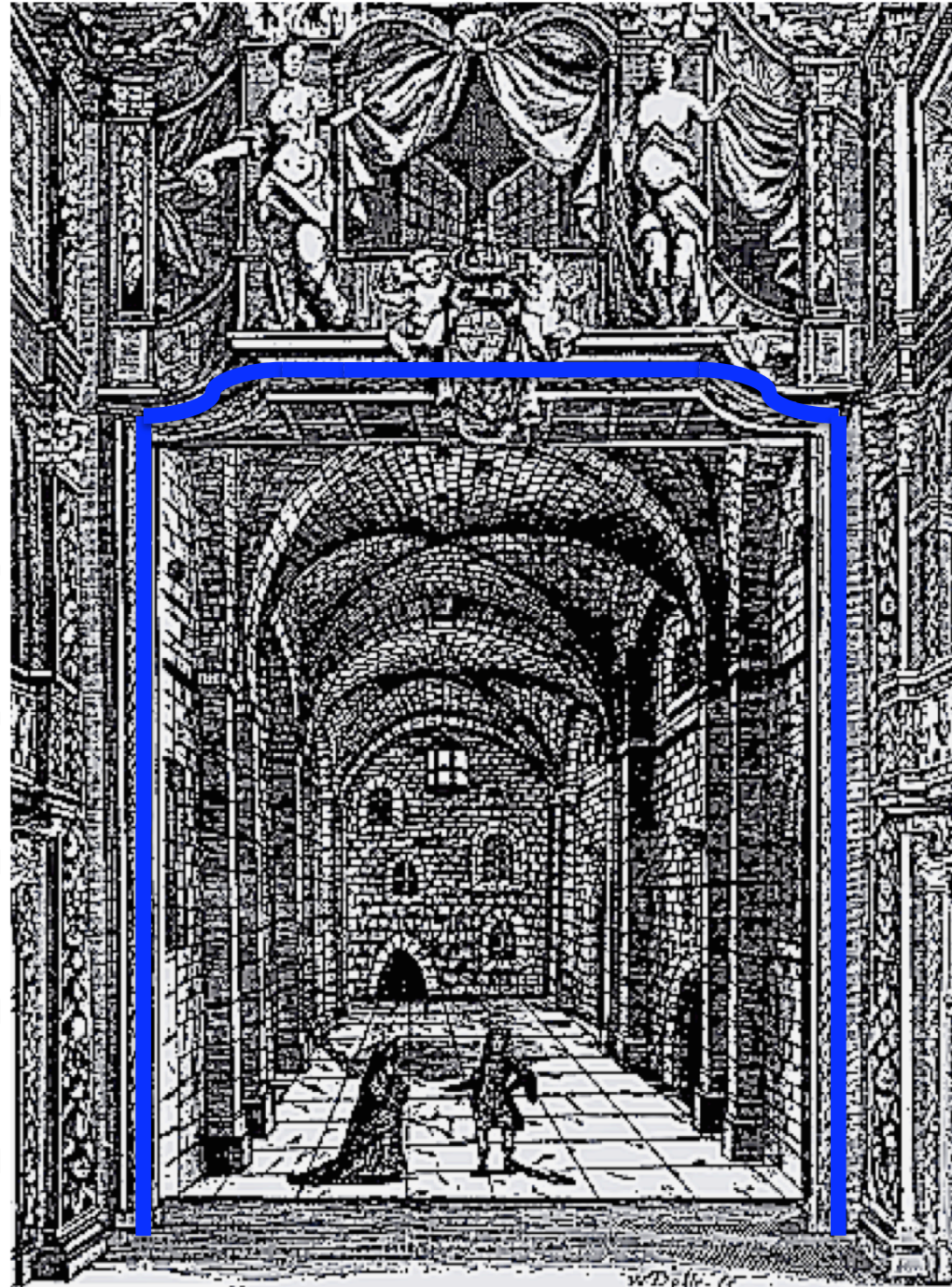


Elkanah Settle's *Empress of Morocco* (1673) – these plates are the only contemporary representations of the inside of Dorset Garden Theatre.



Music Room

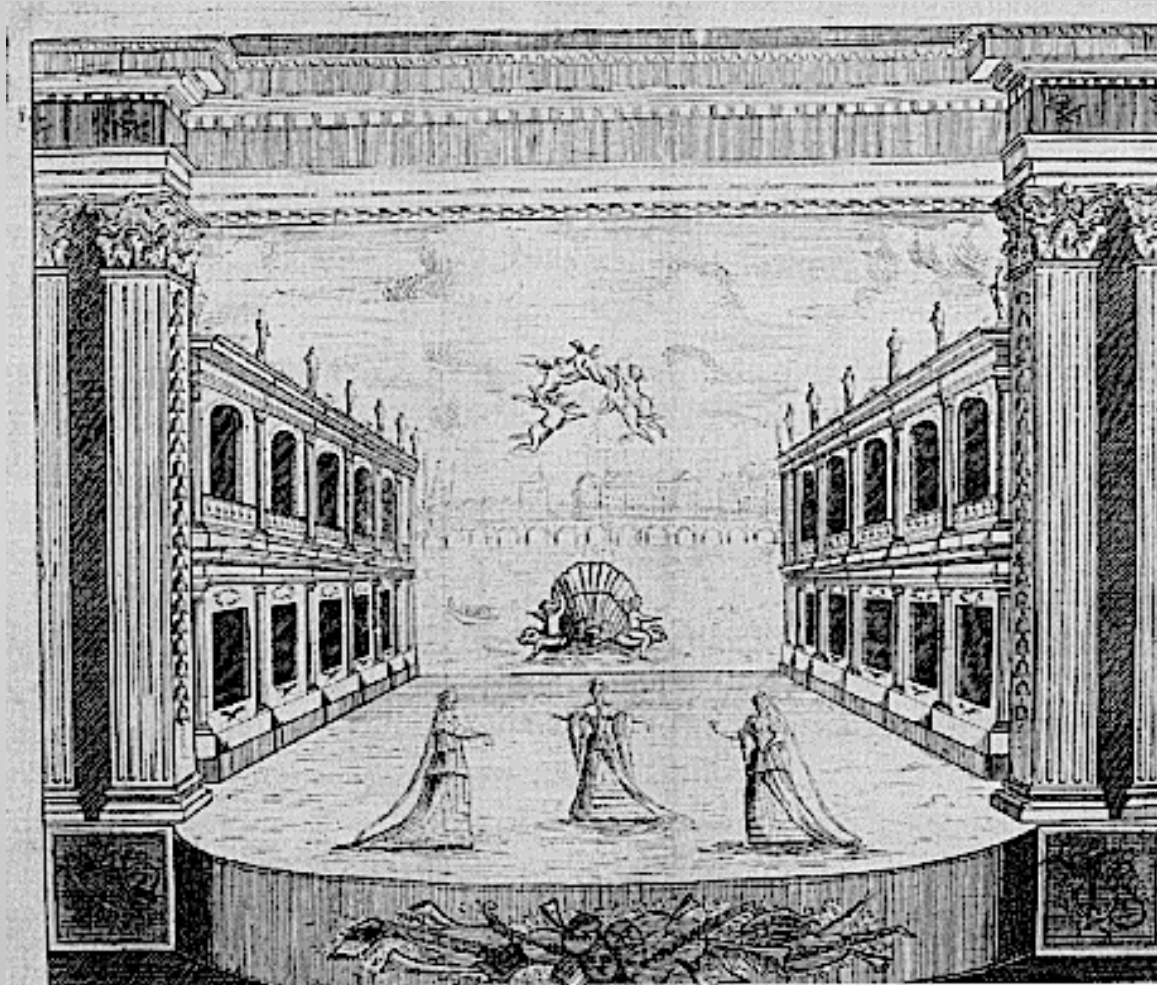
E. Settle, *The
Empress of Morocco*
(1673)



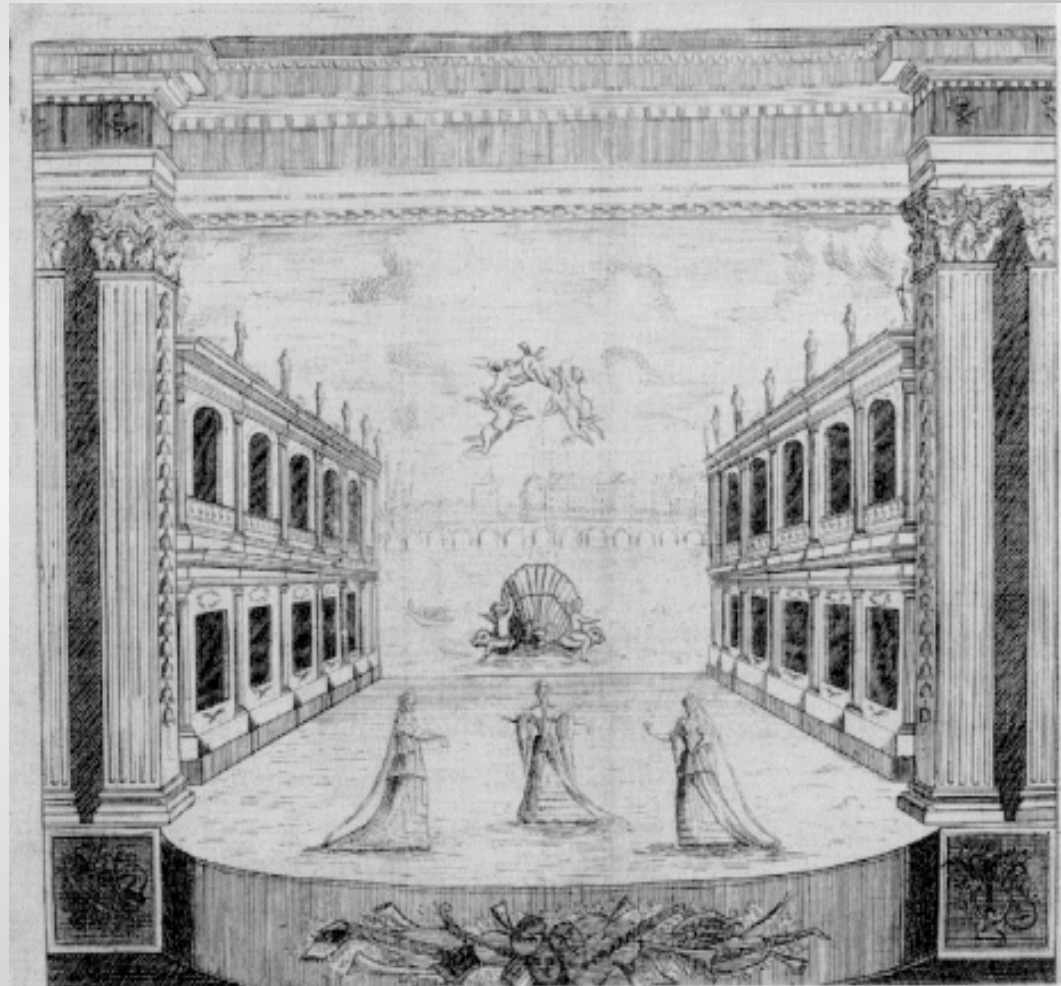
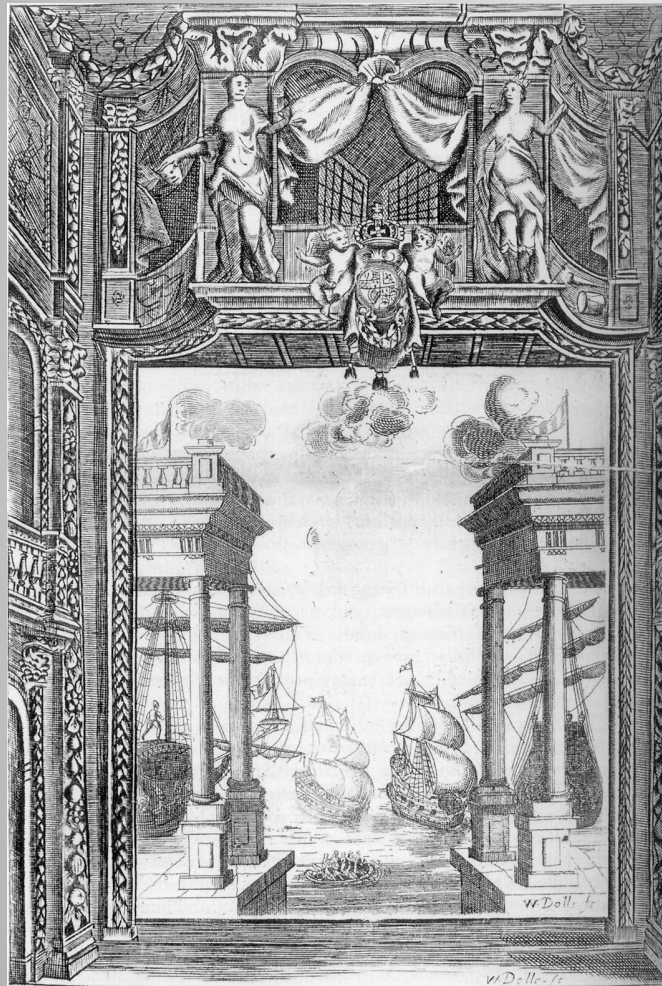
THOMAS KILLIGREW (1612 - 1683)



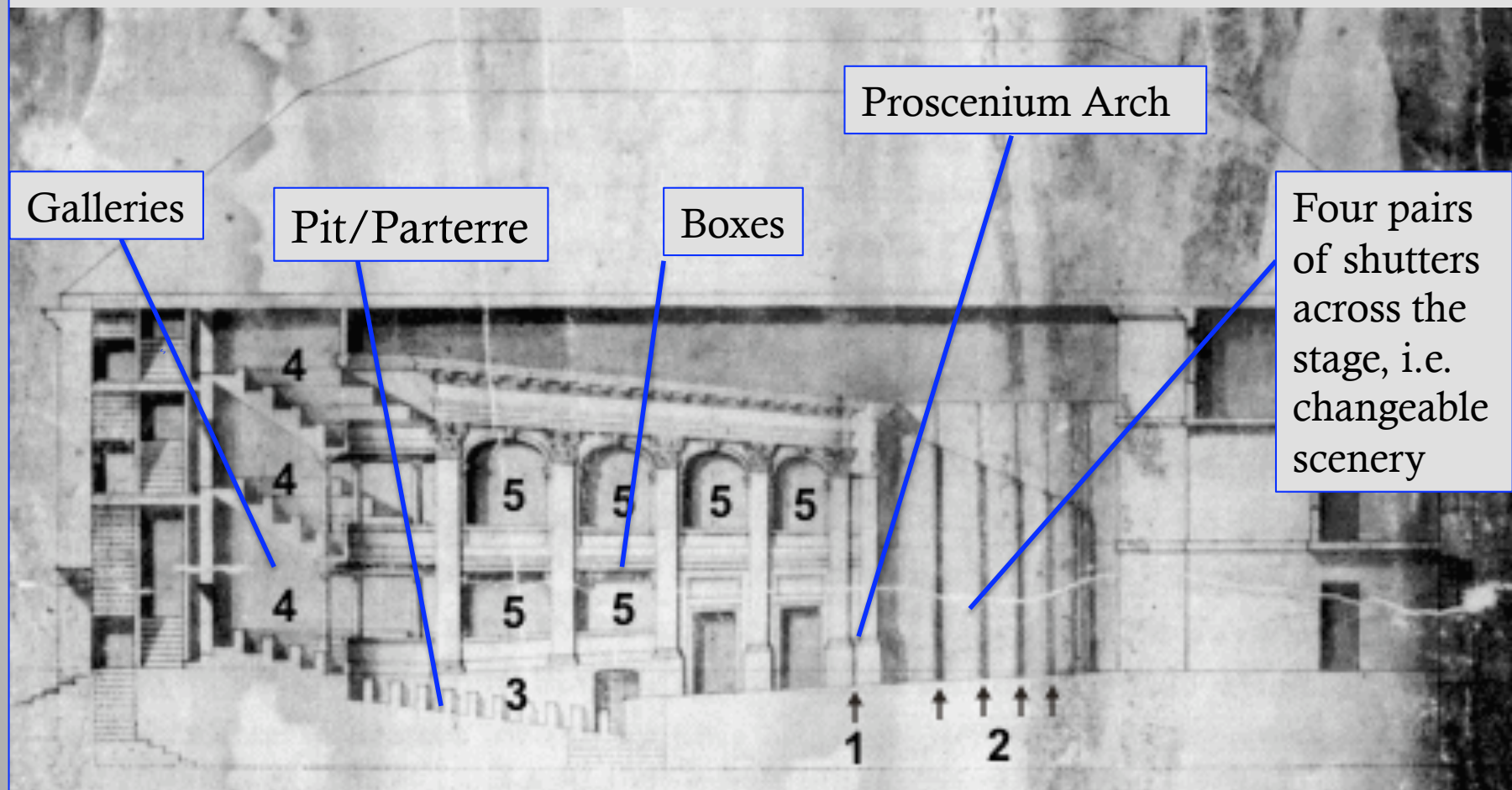
Drury Lane, built in 1674 by architect Christopher Wren
and operated by Thomas Killigrew and the King's
Company of performers



DORSET GARDEN & DRURY LANE

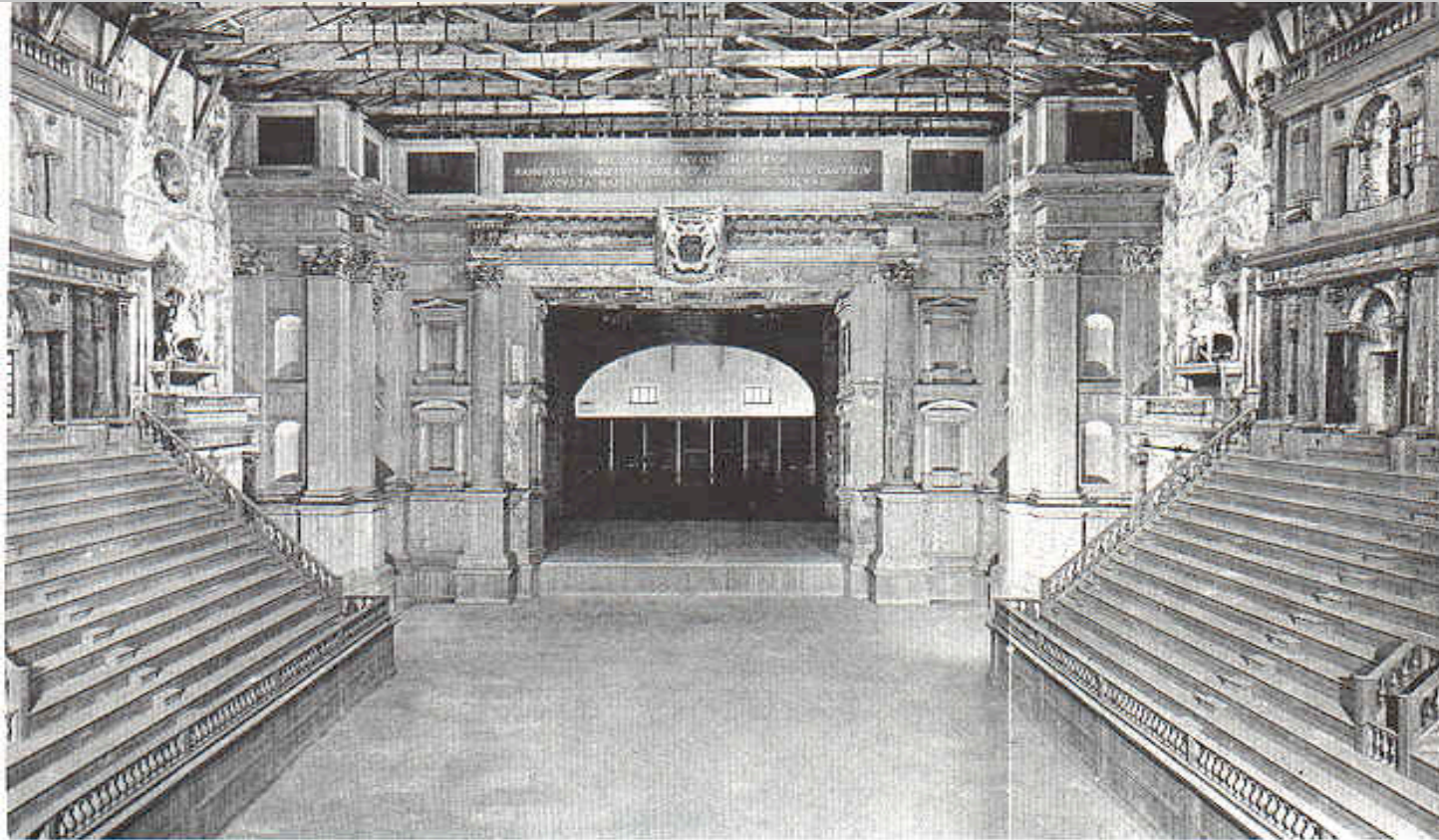


A longitudinal section through a playhouse drawn by Christopher Wren, maybe the plan for the second theatre on the Drury Lane site, which opened in 1674 after the original Theatre Royal had burned to the ground in 1672.



HISTORY OF THE THEATER

THE ARCHED SPECTACLE



34 The *Teatro Farnese*, Parma, completed by Giovanni Aleotti in 1618. With its 'picture frame' scenic stage and horseshoe-shaped auditorium (both derived, albeit indirectly, from ancient Roman practice) it is the earliest example of the basic architectural form of the modern theatre.

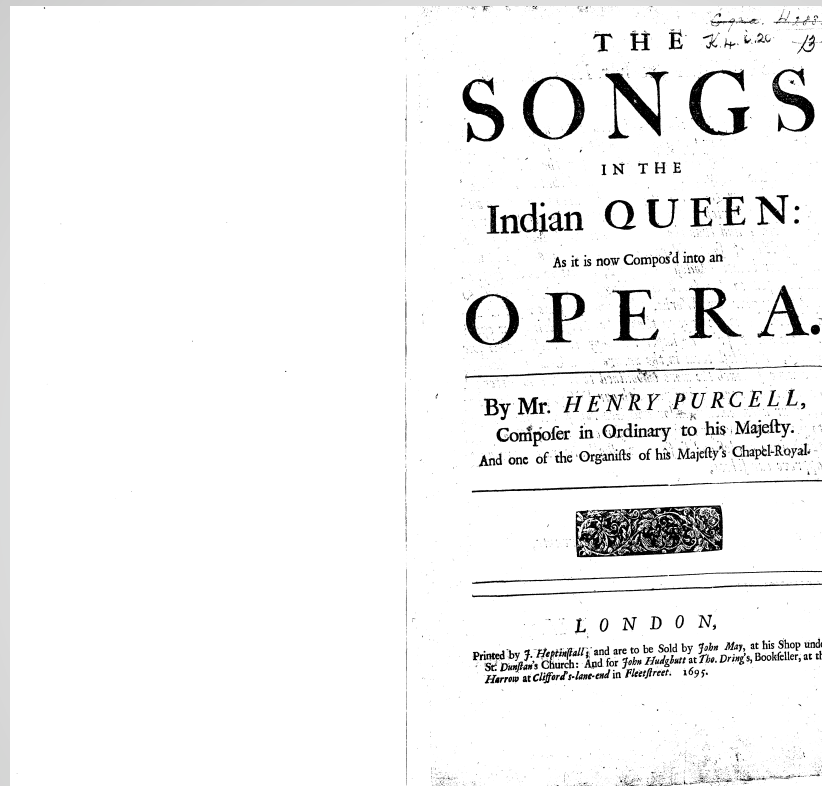
[HTTP://IT.YOUTUBE.COM/WATCH?V=50VVH0KKZLC](http://it.youtube.com/watch?v=50VVH0KKZLC)

JOHN DRYDEN (1631 – 1700)



HENRY PURCELL (1659 – 1695)





The Frontispiece of the operatic *Indian Queen*,
printed in London in 1695.